

CDI Module



Module	C400
Electrode	Bipolar
Inlet TDS (mg/L)	< 1500
Flow rate (L/min)	< 20
Module pressure (bar)	< 0.15
Weight (kg)	13
Dimension (mm)	ø223 X H312

Note 1. CDI is proprietary technology designed by Logicwater

CDI Power Unit

	Model	LWPS
INPUT	Voltage (V)	AC110 & AC220 ± 10%, 1Phase
	Frequency (Hz)	50/60
OUTPUT	Voltage (V) / Current(A)	250-300V/ 1.5 to 7Amp
OTHERS	CDI Cell Operation	Single cell Operation

Note 1. This product supplies power to CDI cells

Note 2. POWER PCB for CDI SINGLE operation

DUAL operation by connecting 2 CDI cells to 2 POWER PCB

→ Continuous production possible

→ Possible to connect up to 9 cells with master and slave power supply configuration

CDI system_ LW400



Model	LW400
Produced Flow (L/hr)	400
Inlet TDS (ppm)	<2000
Power requirement (W)	1500
Weight (kg)	80
Dimension (mm)	W570 X D430 X H793

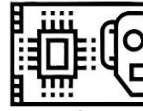
Note 1. Tunable TDS reduction 70 to 80% and High water recovery 70 to 80% depending on feed water.

Note 2. Automated operation and cleaning

Applying LWPS & C400 to Large Systems

Master & Slave Configuration

MASTER CONTROLLER



CDI POWER BOARD



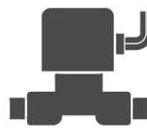
SDI CELL



OTHERS
PUMP, VALVE
etc



Pump



Valve



Water level
Sensor



low Water Pressure
and flow Sensor

etc